

MARINER

WALL BRACKETS











CLASSIC WALL BRACKETS

SUPREME LUXURY EXPERIENCE

SINCE 1893



WALL BRACKET- Ref.: 02531.0
Height: 55 cm / 21,65 in
Width: 26 cm / 10,24 in
Depth: 20 cm / 7,87 in
Net weight: 4,20 Kg / 9,25 lb
Finish: OF (55)





WALL BRACKET– Ref.: 18155.0
Height: 25 cm / 9,84 in
Width: 20 cm / 7,87 in
Depth: 28 cm / 11,02 in
Net weight: 2,33 Kg / 5,13lb
Finish: AN.PV (254)



WALL BRACKET– Ref.: 18156.0
Height: 25 cm / 9,84 in
Width: 42 cm / 16,54 in
Depth: 25 cm / 9,84 in
Net weight: 4,80 Kg / 10,57 lb
Finish: AN.PV (254)



WALL BRACKET– Ref.: 18490.0
Height: 65 cm / 25,59 in
Width: 24 cm / 9,45 in
Depth: 25 cm / 9,84 in
Net weight: 4,50 Kg / 9,91 lb
Finish: PLA. ANT/NB (390)



WALL BRACKET– Ref.: 18581.0
Height: 47 cm / 18,5 in
Width: 51 cm / 20,08 in
Depth: 27 cm / 10,63 in
Net weight: 6,60 Kg / 14,54 lb
Finish: OF (55)



WALL BRACKET– Ref.: 18644.0
Height: 29 cm / 11,42 in
Width: 44 cm / 17,32 in
Depth: 24 cm / 9,45 in
Net weight: 5,57 Kg / 12,27 lb
Finish: AN (49)



WALL BRACKET– Ref.: 18645.0
Height: 30 cm / 11,81 in
Width: 20 cm / 7,87 in
Depth: 29 cm / 11,42 in
Net weight: 3,14 Kg / 6,92 lb
Finish: AN (49)



WALL BRACKET- Ref.: 18739.0
Height: 16 cm / 6,3 in
Width: 34 cm / 13,39 in
Depth: 17 cm / 6,69 in
Net weight: 1,40 Kg / 3,08 lb
Finish: AN.PV (254)

WHITE ALABASTER

WALL BRACKET- Ref.: 18739.1
(BRANDY ALABASTER)



WALL BRACKET- Ref.: 18898.0
Height: 20 cm / 7,87 in
Width: 35 cm / 13,78 in
Depth: 18 cm / 7,09 in
Net weight: 3,20 Kg / 7,05 lb
Finish: OF (55)

WHITE ALABASTER

WALL BRACKET- Ref.: 18898.1
(BRANDY ALABASTER)





WALL BRACKET– Ref.: 19012.0
Height: 99 cm / 38,98 in
Width: 46 cm / 18,11 in
Depth: 25 cm / 9,84 in
Net weight: 7,06 Kg / 15,55 lb
Finish: OA (231)



WALL BRACKET– Ref.: 19069.0
Height: 31 cm / 12,2 in
Width: 30 cm / 11,81 in
Depth: 18 cm / 7,09 in
Net weight: 2,30 Kg / 5,07 lb
Finish: OF/NST (100)





WALL BRACKET– Ref.: 19084.0
Height: 73 cm / 28,74 in
Width: 42 cm / 16,54 in
Depth: 20 cm / 7,87 in
Net weight: 7,01 Kg / 15,44 lb
Finish: OF (55)



WALL BRACKET– Ref.: 19085.0
Height: 73 cm / 28,74 in
Width: 42 cm / 16,54 in
Depth: 20 cm / 7,87 in
Net weight: 7,01 Kg / 15,44 lb
Finish: OF (55)





WALL BRACKET- Ref.: 19100.0
Height: 67 cm / 26,38 in
Width: 36 cm / 14,17 in
Depth: 40 cm / 15,75 in
Net weight: 7,22 Kg / 15,90 lb
Finish: OA (231)





WALL BRACKET– Ref.: 19137.0
Height: 157 cm / 61,81 in
Width: 32 cm / 12,6 in
Depth: 27 cm / 10,63 in
Net weight: 11,40 Kg / 25,11 lb
Finish: BROX/AN (218)



WALL BRACKET– Ref.: 19158.0
Height: 44 cm / 17,32 in
Width: 21 cm / 8,27 in
Depth: 15 cm / 5,91 in
Net weight: 4,60 Kg / 10,13 lb
Finish: OF (55)



WALL BRACKET– Ref.: 19166.0
Height: 30 cm / 11,81 in
Width: 21 cm / 8,27 in
Depth: 10 cm / 3,94 in
Net weight: 2,40 Kg / 5,29 lb
Finish: OF (55)



WALL BRACKET– Ref.: 19211.1
Height: 28 cm / 11,02 in
Width: 20 cm / 7,87 in
Depth: 35 cm / 13,78 in
Net weight: 3,40 Kg / 7,49 lb
Finish: OF (55)

AMBER CRYSTAL



WALL BRACKET– Ref.: 19298.1
Height: 72 cm / 28,35 in
Width: 44 cm / 17,32 in
Depth: 22 cm / 8,66 in
Net weight: 4,60 Kg / 10,13 lb
Finish: POE (380)



*WALL BRACKET– Ref.: 19230.0
Height: 97 cm / 38,19 in
Width: 40 cm / 15,75 in
Depth: 20 cm / 7,87 in
Net weight: 9,01 Kg / 19,85 lb
Finish: OA (231)*

WALL BRACKET- Ref.: 19328.0
Height: 64 cm / 25,2 in
Width: 47 cm / 18,5 in
Depth: 25 cm / 9,84 in
Net weight: 5,80 Kg / 12,78 lb
Finish: OF (55)





*WALL BRACKET– Ref.: 19347.0
Height: 86 cm / 33,86 in
Width: 50 cm / 19,69 in
Depth: 25 cm / 9,84 in
Net weight: 7,80 Kg / 17,18 lb
Finish: OA (231)*



WALL BRACKET– Ref.: 19386.0
Height: 51 cm / 20,08 in
Width: 38 cm / 14,96 in
Depth: 20 cm / 7,87 in
Net weight: 6,80 Kg / 14,98 lb
Finish: PL. ANT (387)

WHITE GLASS



WALL BRACKET– Ref.: 19386.1
Height: 51 cm / 20,08 in
Width: 38 cm / 14,96 in
Depth: 20 cm / 7,87 in
Net weight: 6,80 Kg / 14,98 lb
Finish: OF (55)

GOLD GLASS



WALL BRACKET– Ref.: 19388.0
Height: 65 cm / 25,59 in
Width: 23 cm / 9,06 in
Depth: 22 cm / 8,66 in
Net weight: 2,62 Kg / 5,77 lb
Finish: OF/NST (100)



WALL BRACKET– Ref.: 19397.0
Height: 41 cm / 16,14 in
Width: 27 cm / 10,63 in
Depth: 15 cm / 5,91 in
Net weight: 2,23 Kg / 4,91 lb
Finish: OF (55)



WALL BRACKET– Ref.: 19398.0
Height: 41 cm / 16,14 in
Width: 27 cm / 10,63 in
Depth: 15 cm / 5,91 in
Net weight: 2,23 Kg / 4,91 lb
Finish: OF (55)



WALL BRACKET- Ref.: 19443.0
Height: 35 cm / 13,78 in
Width: 21 cm / 8,27 in
Depth: 11 cm / 4,33 in
Net weight: 2,31 Kg / 5,90 lb
Finish: OF (55)

WHITE ALABASTER



WALL BRACKET- Ref.: 19492.0
Height: 61 cm / 24,02 in
Width: 34 cm / 13,39 in
Depth: 29 cm / 11,42 in
Net weight: 4,20 Kg / 9,25 lb
Finish: OF/NST (100)



WALL BRACKET– Ref.: 19496.0
Height: 31 cm / 12,2 in
Width: 32 cm / 12,6 in
Depth: 12 cm / 4,72 in
Net weight: 3,99 Kg / 8,79 lb
Finish: PLA.VI. (56)

WHITE GLASS



WALL BRACKET– Ref.: 19496.1
Height: 31 cm / 12,2 in
Width: 32 cm / 12,6 in
Depth: 12 cm / 4,72 in
Net weight: 3,99 Kg / 8,79 lb
Finish: OF (55)

GOLD GLASS



WALL BRACKET– Ref.: 19521.0
Height: 40 cm / 15,75 in
Width: 24 cm / 9,45 in
Depth: 12 cm / 4,72 in
Net weight: 4,01 Kg / 8,83 lb
Finish: OF (55)



WALL BRACKET– Ref.: 19572.1
Height: 24 cm / 9,45 in
Width: 41 cm / 16,14 in
Depth: 21 cm / 8,27 in
Net weight: 3,78 Kg / 8,33 lb
Finish: OF (55)
GOLD GLASS



WALL BRACKET– Ref.: 19648.0
Height: 19 cm / 7,48 in
Width: 46 cm / 18,11 in
Depth: 21 cm / 8,27 in
Net weight: 3,00 Kg / 6,61 lb
Finish: OF (55)



WALL BRACKET– Ref.: 19604.0
Height: 24 cm / 9,45 in
Width: 46 cm / 18,11 in
Depth: 23 cm / 9,06 in
Net weight: 3,60 Kg / 7,93 lb
Finish: OF (55)

Ref.: 19604.0 (Scholer crystal)
Ref.: 19604.1 (Swarovski crystal)



WALL BRACKET– Ref.: 19673.0
Height: 80 cm / 31,5 in
Width: 30 cm / 11,81 in
Depth: 24 cm / 9,45 in
Net weight: 7,11 Kg / 15,66 lb
Finish: OF (55)



WALL BRACKET– Ref.: 19766.0
Height: 53 cm / 20,87 in
Width: 36 cm / 14,17 in
Depth: 24 cm / 9,45 in
Net weight: 3,26 Kg / 7,18 lb
Finish: OF (55)



*WALL BRACKET– Ref.: 19767.0
Height: 42 cm / 16,54 in
Width: 21 cm / 8,27 in
Depth: 24 cm / 9,45 in
Net weight: 2,70 Kg / 5,95 lb
Finish: OF (55)*



*WALL BRACKET– Ref.: 19815.0
Height: 42 cm / 16,54 in
Width: 40 cm / 15,75 in
Depth: 25 cm / 9,84 in
Net weight: 3,58 Kg / 7,89 lb
Finish: OF (55)*



WALL BRACKET– Ref.: 19838.0
Height: 50 cm / 19,69 in
Width: 40 cm / 15,75 in
Depth: 24 cm / 9,45 in
Net weight: 2,54 Kg / 5,59 lb
Finish: OF/NST (100)

SWAROVSKI ELEMENTS





WALL BRACKET– Ref.: 19849.0
Height: 65 cm / 25,59 in
Width: 64 cm / 25,2 in
Depth: 40 cm / 15,75 in
Net weight: 15,80 Kg / 34,80 lb
Finish: OF (55)

SCHOLER CRYSTAL



WALL BRACKET– Ref.: 19880.0
Height: 60 cm / 23,62 in
Width: 37 cm / 14,57 in
Depth: 15 cm / 5,91 in
Net weight: 3,20 Kg / 7,05 lb
Finish: PLA.VI (56)



WALL BRACKET– Ref.: 19881.0
Height: 60 cm / 23,62 in
Width: 37 cm / 14,57 in
Depth: 15 cm / 5,91 in
Net weight: 3,20 Kg / 7,05 lb
Finish: PLA.VI (56)



WALL BRACKET- Ref.: 19882.0
Height: 52 cm / 20,47 in
Width: 50 cm / 19,69 in
Depth: 23 cm / 9,06 in
Net weight: 5,53 Kg / 12,18 lb
Finish: PLA.VI (56)



*WALL BRACKET– Ref.: 19891.0
Height: 77 cm / 30,31 in
Width: 28 cm / 11,02 in
Depth: 14 cm / 5,51 in
Net weight: 2,20 Kg / 4,85 lb
Finish: PLA.VI (56)*





*WALL BRACKET- Ref.: 19892.0
Height: 110 cm / 43,31 in
Width: 28 cm / 11,02 in
Depth: 14 cm / 5,51 in
Net weight: 1,80 Kg / 3,96 lb
Finish: OF (55)*



WALL BRACKET– Ref.: 19921.0
Height: 100 cm / 39,37 in
Width: 64 cm / 25,2 in
Depth: 38 cm / 14,96 in
Net weight: 16,71 Kg / 36,81 lb
Finish: OA (231)

SCHOLER CRYSTAL



WALL BRACKET– Ref.: 19929.0
Height: 92 cm / 36,22 in
Width: 60 cm / 23,62 in
Depth: 30 cm / 11,81 in
Net weight: 14,40 Kg / 31,72 lb
Finish: OA (231)

SCHOLER CRYSTAL



WALL BRACKET– Ref.: 19954.0
Height: 53 cm / 20,87 in
Width: 45 cm / 17,72 in
Depth: 23 cm / 9,06 in
Net weight: 4,00 Kg / 8,81 lb
Finish: PLA. VI/NB (455)



WALL BRACKET– Ref.: 20050.0
Height: 68 cm / 26,77 in
Width: 15 cm / 5,91 in
Depth: 27 cm / 10,63 in
Net weight: 3,00 Kg / 6,61 lb
Finish: OF (55)



*WALL BRACKET- Ref.: 20006.0
Height: 51 cm / 20,08 in
Width: 30 cm / 11,81 in
Depth: 27 cm / 10,63 in
Net weight: 4,20 Kg / 9,25 lb
Finish: OF (55)*





*WALL BRACKET– Ref.: 20023.0
Height: 65 cm / 25,59 in
Width: 41 cm / 16,14 in
Depth: 20 cm / 7,87 in
Net weight: 7,00 Kg / 15,42 lb
Finish: OA (231)*





WALL BRACKET- Ref.: 20051.0
Height: 62 cm / 24,41 in
Width: 38 cm / 14,96 in
Depth: 22 cm / 8,66 in
Net weight: 5,00 Kg / 11,01 lb
Finish: OA/B/NB (456)





WALL BRACKET- Ref.: 20051.0
Height: 62 cm / 24,41 in
Width: 38 cm / 14,96 in
Depth: 22 cm / 8,66 in
Net weight: 5,00 Kg / 11,01 lb
Finish: P.ANT/B/NB (457)





WALL BRACKET– Ref.: 20066.0
Height: 61 cm / 24,02 in
Width: 42 cm / 16,54 in
Depth: 24 cm / 9,45 in
Net weight: 6,00 Kg / 13,22 lb
Finish: OF/NST (100)



WALL BRACKET- Ref.: 20082.0
Height: 89 cm / 35,04 in
Width: 22 cm / 8,66 in
Depth: 19 cm / 7,48 in
Net weight: 4,25 Kg / 9,36 lb
Finish: OA/NB (288)





WALL BRACKET– Ref.: 20093.0
Height: 47 cm / 18,5 in
Width: 31 cm / 12,2 in
Depth: 18 cm / 7,09 in
Net weight: 1,84 Kg / 4,05 lb
Finish: OA (231)



WALL BRACKET– Ref.: 20094.0
Height: 42 cm / 16,54 in
Width: 39 cm / 15,35 in
Depth: 15 cm / 5,91 in
Net weight: 1,85 Kg / 4,07 lb
Finish: OF (55)





*WALL BRACKET– Ref.: 20102.0
Height: 49 cm / 19,29 in
Width: 37 cm / 14,57 in
Depth: 18 cm / 7,09 in
Net weight: 4,30 Kg / 9,47 lb
Finish: OA (231)*





WALL BRACKET- Ref.: 20103.0
Height: 107 cm / 42,13 in
Width: 49 cm / 19,29 in
Depth: 17 cm / 6,69 in
Net weight: 5,00 Kg / 11,01 lb
Finish: OA (231)





WALL BRACKET- Ref.: 20111.0
Height: 46 cm / 18,11 in
Width: 33 cm / 12,99 in
Depth: 13 cm / 5,12 in
Net weight: 1,63 Kg / 3,59 lb
Finish: OA (231)





WALL BRACKET- Ref.: 20185.0
Height: 68 cm / 26,77 in
Width: 43 cm / 16,93 in
Depth: 27 cm / 10,63 in
Net weight: 6,15 Kg /13,55 lb
Finish: OA/NB (288)





WALL BRACKET– Ref.: 20265.0
Height: 48 cm / 18,9 in
Width: 10 cm / 3,94 in
Depth: 17 cm / 6,69 in
Net weight: 2,00 Kg /4,41 lb
Finish: OA (231)

WALL BRACKET– Ref.: 20266.0
Height: 22 cm / 8,66in
Width: 12 cm / 4,72 in
Depth: 16 cm / 6,3 in
Net weight: 2,00 Kg /4,41 lb
Finish: OA (231)



WALL BRACKET– Ref.: 20118.0
Height: 36 cm / 14,17 in
Width: 16 cm / 6,3 in
Depth: 29 cm / 11,42 in
Net weight: 1,68 Kg /3,70 lb
Finish: AN(49)



GALLERY

WALL BRACKETS

SUPREME LUXURY EXPERIENCE

SINCE 1893



WALL BRACKET- Ref.: 19924.0
Height: 73 cm / 28,74 in
Width: 19 cm / 7,48 in
Depth: 19 cm / 7,48 in
Net weight: 2,01 Kg /4,43 lb
Finish: PLA.B (4)



WALL BRACKET- Ref.: 19968.0
Height: 54 cm / 21,26 in
Width: 14 cm / 5,51 in
Depth: 20 cm / 7,87 in
Net weight: 3,40 Kg /7,49 lb
Finish: PLA.B (4)



WALL BRACKET- Ref.: 20001.0
Height: 53 cm / 20,87 in
Width: 34 cm / 13,39 in
Depth: 17 cm / 6,69 in
Net weight: 5,60 Kg /12,33 lb
Finish: OF (55)





*WALL BRACKET– Ref.: 20029.0
Height: 88 cm / 34,65 in
Width: 60 cm / 23,62 in
Depth: 35 cm / 13,78 in
Net weight: 14,20 Kg /31,28 lb
Finish: OF (55)*





*WALL BRACKET– Ref.: 20032.0
Height: 95 cm / 37,4 in
Width: 35 cm / 13,78 in
Depth: 15 cm / 5,91 in
Net weight: 4,10 Kg /9,03 lb
Finish: NI.B (516)*



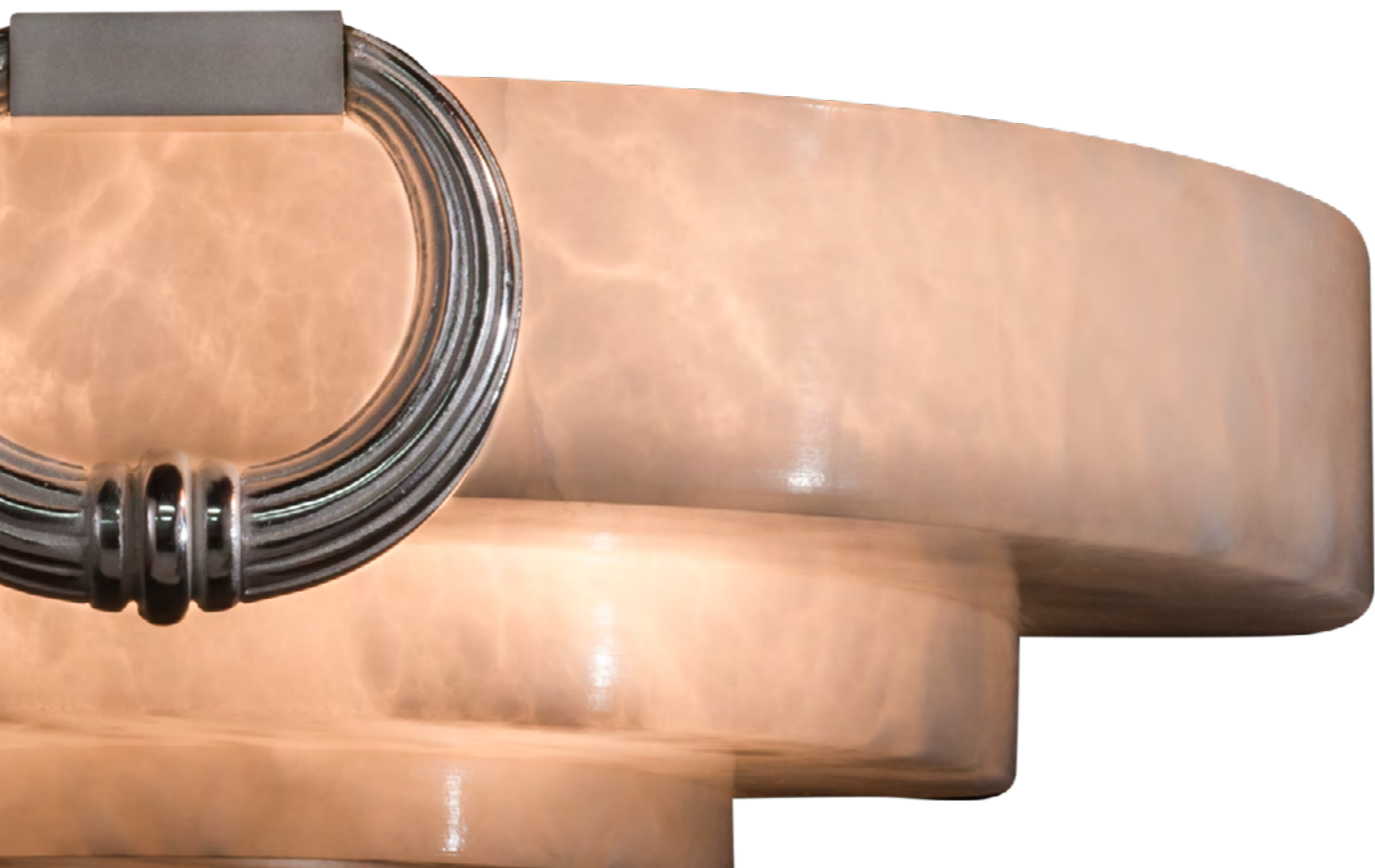
*WALL BRACKET– Ref.: 20083.0
Height: 26 cm / 10,24 in
Width: 24 cm / 9,45 in
Depth: 13 cm / 5,12 in
Net weight: 1,55 Kg /3,41 lb
Finish: PLA.B (4)*



*WALL BRACKET- Ref.: 20099.0
Height: 23 cm / 9,06 in
Width: 41 cm / 16,14 in
Depth: 12 cm / 4,72 in
Net weight: 3,00 Kg /6,61 lb
Finish: PL.ANT. (387)*



WALL BRACKET- Ref.: 20090.0
Height: 12 cm / 4,72 in
Width: 41 cm / 16,14 in
Depth: 23 cm / 9,06 in
Net weight: 3,50 Kg /7,71 lb
Finish: PL.ANT (387)





*WALL BRACKET– Ref.: 20142.1
Height: 40 cm / 15,75 in
Width: 21 cm / 8,27 in
Depth: 11 cm / 4,33 in
Net weight: 6,00 Kg /13,22 lb
Finish: OA (231)*





WALL BRACKET- Ref.: 20144.1
(24K Gold Glass)
Height: 41 cm / 16,14 in
Width: 26 cm / 10,24 in
Depth: 13 cm / 5,12 in
Net weight: 4,00 Kg /8,81 lb
Finish: OA (231)





*WALL BRACKET– Ref.: 20152.0
Height: 40 cm / 15,75 in
Width: 24 cm / 9,45 in
Depth: 12 cm / 4,72 in
Net weight: 4,90 Kg /10,79 lb
Finish: CR.B (420)*





*WALL BRACKET– Ref.: 20160.1
Height: 39 cm / 15,35 in
Width: 28 cm / 11,02 in
Depth: 17 cm / 6,69 in
Net weight: 3,10 Kg / 6,83 lb
Finish: CR.B (420)*



*WALL BRACKET– Ref.: 20161.0
Height: 86 cm / 33,86 in
Width: 20 cm / 7,87 in
Depth: 10 cm / 3,94 in
Net weight: 6,1 Kg / 13,44 lb
Finish: B.BR (550)*



*WALL BRACKET– Ref.: 20163.0
Height: 65 cm / 25,59 in
Width: 20 cm / 7,87 in
Depth: 10 cm / 3,94 in
Net weight: 5,75 Kg / 12,00 lb
Finish: B.BR (550)*



*WALL BRACKET– Ref.: 20162.0
Height: 45 cm / 17,72 in
Width: 20 cm / 7,87 in
Depth: 10 cm / 3,94 in
Net weight: 3,70 Kg / 8,15 lb
Finish: B.BR (550)*



*WALL BRACKET- Ref.: 20165.0
Height: 44 cm / 17,32 in
Width: 22 cm / 8,66 in
Depth: 11 cm / 4,33 in
Net weight: 3,35 Kg / 7,38 lb
Finish: PL.ANT. (387)*

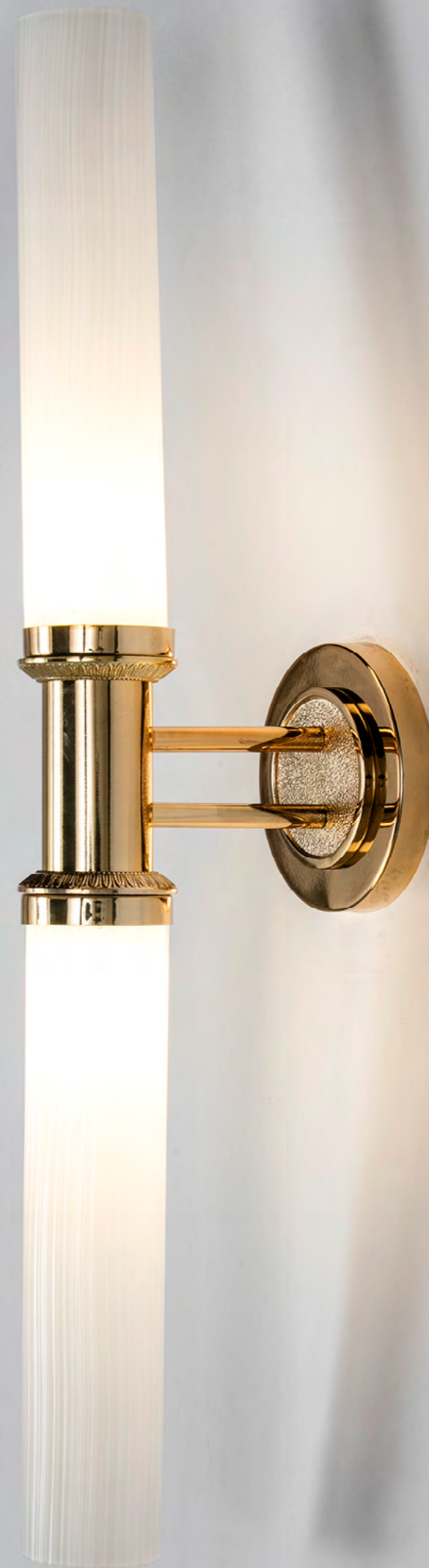




WALL BRACKET- Ref.: 20212.0
Height: 42 cm / 16,54 in
Width: 13 cm / 5,12 in
Depth: 17 cm / 6,69 in
Net weight: 1,55 Kg / 3,41 lb
Finish: DB (67)



WALL BRACKET- Ref.: 20213.0
Height: 72 cm / 28,35 in
Width: 13 cm / 5,12 in
Depth: 17 cm / 6,69 in
Net weight: 2,39 Kg / 5,26 lb
Finish: DB (67)





*WALL BRACKET– Ref.: 20217.0
Height: 39 cm / 15,35 in
Width: 24 cm / 9,45 in
Depth: 16 cm / 6,3 in
Net weight: 2,65 Kg / 5,84 lb
Finish: DB (67)*





WALL BRACKET- Ref.: 20233.0
Height: 26 cm / 10,24 in
Width: 13 cm / 5,12 in
Depth: 23 cm / 9,06 in
Net weight: 3,10 Kg / 6,83 lb
Finish: D.B/ F.U (591)





WALL BRACKET– Ref.: 20256.0
Height: 45 cm / 17,72 in
Width: 11 cm / 4,33 in
Depth: 17 cm / 6,69 in
Net weight: 4,00 Kg / 8,81 lb
Finish: DB (67)

WALL BRACKET– Ref.: 20255.0
Height: 45 cm / 17,72 in
Width: 28 cm / 11,02 in
Depth: 15 cm / 5,91 in
Net weight: 7,00 Kg / 15,42 lb
Finish: DB (67)





*WALL BRACKET– Ref.: 20261.0
(Fume crystal)
Height: 47 cm / 18,5 in
Width: 40 cm / 15,75 in
Depth: 19 cm / 7,48 in
Net weight: 3,00 Kg / 6,61 lb*



MARINIER

MARINIER

MARINIER

MARINIER

MARINIER
Made in Spain

MARINIER
Made in Spain



DA (291)
Antique Gold Plated



DF (55)
French Gold



DB (67)
Polished Brass



POE (350)
Old Gold Leaf



BROX (211)
Oxidized Bronze



AN (491)
Art Nouveau



BE (316)
Aged Bronze



PPE (391)
Old Silver Leaf



PLANT (387)
Antique Silver Plated



PLB (04)
Polished Silver



PLAVI (56)
Old Silver



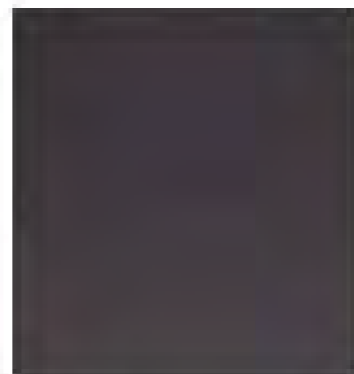
AC.B (477)
Polished Steel



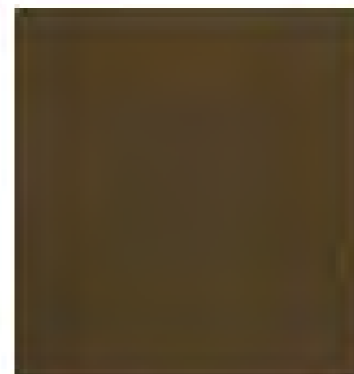
NI.B (516)
Polished Nickel



CR.B (420)
Polished Chrome



FU (563)



B.BR (550)

marinerluxury.com